

# On to Milaca State, a place to relax

## Panther CC teams set for section meet

By Josh Randt  
Sports Editor

At the Section 5A cross country meet in Milaca on Thursday, the Panther boys' cross country team will be searching for its 10th first-place finish of the season, while the girls look to post their personal bests.

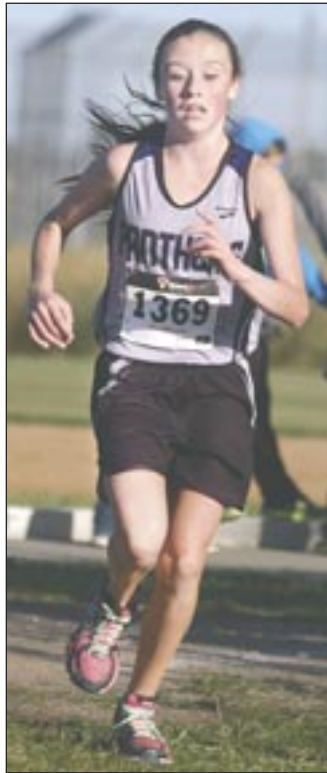
Tuesday, Oct. 14, at the Watertown-Mayer invitational, Jeff Delwiche's boys took the top spot for their fifth event in a row with 27 team points.

Glencoe-Silver Lake's girls' team finished seventh out of eight teams at the event in Watertown with 141 points.

Delwiche told his Panthers it was OK to go for the win at Watertown, but didn't want them overexerting themselves, knowing what's in store this week.

"The times were definitely slower than what we'd normally be running, but was exactly what we wanted," said Delwiche. "They wanted to win, and we told them that was OK, but we wanted them to take it pretty easy."

Even though they let off the gas a bit, GSL had three boys



File photo by Josh Randt

**Eighth-grader Annamaria Falcon has had a successful second half of the season for the girls' cross country team, earning honorable mention in the Wright County Conference's West division.**

By Josh Randt  
Sports Editor

Oftentimes, coaches want their players toeing that fine line between relaxation and competitive excitement.

For Thursday's Class A state tennis meet, Head Coach Robb DeCorsey said his doubles tandem of Piper Davis and Rachel Rusten needs to stay loose, and treat it like any other competition.

"They're good as long as they're not thinking about tennis right now," DeCorsey seriously joked. "They can't play scared. It's just like any other match."

When the rackets start swinging Thursday morning at the Reed-Sweat tennis center in Minneapolis, Davis and Rusten will have a tough task ahead of them.

Cora Delich (10) and Katelyn Rice (12) of Eveleth-Gilbert are a formidable duo, and will look to overwhelm the two Panther seniors with their strength.

"They're very good," DeCorsey said. "They hit hard, and they try to overpower you."

Rice has been ranked in the top 10 Class A individuals all season, and is currently fifth.

The key to beating the two Golden Bears from Eveleth-Gilbert?

"They've got to go after them," DeCorsey said. "They have to hit the ball, not play soft and play with them."



File photo by Josh Randt

**Rachel Rusten (center) and Piper Davis (right) have made it to the Class A state tennis tournament for doubles. Head Coach Robb DeCorsey (left) said the key to his Panthers' success at their**

**first-ever state tournament is to relax and play loose. The two will be tested right away against Cora Delich and Katelyn Rice of Eveleth-Gilbert starting at 10 a.m. Thursday in Minneapolis.**

Since DeCorsey has been coaching tennis at Glencoe-Silver Lake, every state entrant has lost to the eventual state champion, and usually in the second round.

If the Panthers lose their first match, they fall into the consolation bracket with another loss ending their run. Should they

beat Rice and Delich in the opening round, any ensuing loss would also be the end of the line.

Davis and Rusten set a goal to make it this far at the beginning of the season, and accomplishing that feat is something DeCorsey said they should be proud of.

"They're in the state tourney, and that's huge," he said. "They've set new goals, and now they want to advance to the next day. They've just got to relax, and play."

Their match starts at 10 a.m.; their second contest is at 2 p.m. at the same site regardless of the outcome.

**On to Milaca**  
Turn to page 2B



**Josh Randt**

## What the WCC is all about

In a previous column, I compared the 2004 Panther football team I played on to this year's team.

I mentioned how our offense had trouble keeping the ball off the ground running Scott Tschimperle's option game plan. But once the offense got its bearings, it was clear we were a force to be reckoned with.

While most people would agree our section opponents were tougher than the current residents of Section 2, there remains a similarity: teams in our section have historically had near unblemished records going into the post season, primarily because of playing in weaker conferences.

This may sound arrogant, but if you look at the teams GSL regularly plays in the Wright County Conference, there's no denying that the Panthers are battle tested when it comes time for the playoffs.

Like this year's team, we missed out on one of the top two seeds and had to play a Tuesday playoff game.

We ran through Waconia 29-14 before giving Jordan (6-3) and LeSueur-Henderson (10-0) a taste of what Wright County football is like.

We were fortunate enough to host the opening round of the state tournament against Plainview-Elgin-Millville (PEM) and gave a dramatic ending to the history of Allen Field with a 35-28 nail-biter before moving on to the Metrodome — a place few of us thought we'd get to.

We had a chip on our shoulder that formed in the regular season, which we carried through the playoffs.

**Randt**  
Turn to page 2B

# Petersen propels Panthers past Cardinals; 4 TDs, 3 INTs

By Josh Randt  
Sports Editor

The regular season closed with a stellar performance by the Panther football team, as Glencoe-Silver Lake sent Annandale home with a 46-14 loss on senior night to roll into the playoffs on a four-game winning streak.

From the get-go, the Cardinals couldn't win the battle at the line of scrimmage, as was evident by GSL's 368 yards gained on the ground to Annandale's mere 87.

The most impressive performance of the evening came from junior utility-man Teddy Petersen, who not only rushed for 145 yards and three touchdowns on 23 carries, but also intercepted three first half passes.

"I work hard at it," Petersen said of his abilities before humbling himself. "I'm blessed, and I just do (what I can) with what I have."

That may be the understatement of the year, as Petersen

capped off GSL's opening drive with a 12-yard touchdown run before returning his first of three interceptions to a touchdown on Annandale's ensuing drive, giving the Panthers a 14-0 lead early on.

Petersen was helped out on the play by edge-rushing senior captain Zach Jungclaus, who forced a high, wobbly throw from Cardinal quarterback Derek Tomberlin with some heavy pressure all night.

The starting Panther defense finished with three sacks total and four first-half interceptions, and didn't allow a single point. Nick Brelje had the other interception, while Petersen and Nick Tabbert scored the remaining sacks.

Annandale ran back Alexis Salgado's third kickoff at the tail end of the first quarter following a 26-yard Panther touchdown pass from Keaton Anderson to Bennett Bielke, which left the score 21-6.

GSL took a 33-6 lead into the half as Petersen closed out the

first two frames with his third and final interception.

It didn't take long for the Panthers to improve upon that gap with a pair of third-quarter touchdowns by Petersen and Bielke.

Petersen scored on the ground from 15 yards, and Bielke displayed some sharp ball skills on a 39-yard touchdown pass from Anderson, as the senior plucked the ball away from his defender for the score.

With 1:00 remaining in the third and a 46-6 advantage, the Panther reserves played the remainder of the game.

The Panther offense has steadily improved since Petersen and Bielke arrived in the backfield, but most importantly, the refurbished offensive line has been sealing lanes and getting downfield to spring the speedy backs.

Head Coach Scott Tschimperle said Alex Romano has

**Panthers/Cardinals**  
Turn to page 2B



**Teddy Petersen (9) put forth his best offensive and defensive performance of the season in the 46-14 dismantling of Annandale in Glencoe on Wednesday, Oct. 15. The junior tailback/safety finished with 145 yards rushing and**

**three touchdowns on 23 carries. He also had three interceptions and returned the first for a 35-yard touchdown. Action is from the second quarter, with Alex Romano (74) and Tanner Grack (12) clearing space for Petersen.**

Chronicle photo by Josh Randt

# Know your enemy

By Josh Randt  
Sports Editor

Taking third place at the Rochester Exchange Club's fall invitational, the Lady Panther volleyball team is meticulously preparing for its section rematch with Holy Family Catholic on Thursday, Oct. 23.

Glencoe-Silver Lake won three out of its four mini matches at the weekend tournament, scoring wins over Minneapolis Patrick Henry (25-10, 25-13), Pine Island (25-15, 21-25, 15-11) and even Rochester Century (16-25, 25-21, 15-12) from Class AAA in the third-place match.

The lone loss came Saturday against Fillmore Central, as the Panthers fell 25-21 and 25-13. That loss put the Lady Panthers in the consolation game against Rochester Century, which claimed the opening set 25-16.

GSL bounced right back and took the second set 25-21 before narrowly escaping with third place by way of a 15-12 final set.

Statistically, GSL's best match was against Pine Island.

Senior captain and outside

**Familiar foe**  
Turn to page 2B



File photo by Josh Randt

**Captain Lexi Kerslake runs through a tunnel of students after a home win.**









STATE OF MINNESOTA		
STATE GENERAL ELECTION BALLOT		
INSTRUCTIONS TO VOTERS: To vote, completely fill in the oval(s) next to your choice(s) like this: <input type="radio"/>		
<b>FEDERAL OFFICES</b>	<b>STATE OFFICES</b>	<b>COUNTY OFFICES</b>
U.S. SENATOR VOTE FOR ONE	SECRETARY OF STATE VOTE FOR ONE	COUNTY COMMISSIONER DISTRICT 2 VOTE FOR ONE
<input type="radio"/> STEVE CARLSON Independence	<input type="radio"/> BOB HELLAND Independence	<input type="radio"/> KERMIT TERLINDEN
<input type="radio"/> MIKE MCFADDEN Republican	<input type="radio"/> DAN SEVERSON Republican	<input type="radio"/> DOUG KRUEGER
<input type="radio"/> AL FRANKEN Democratic-Farmer-Labor	<input type="radio"/> STEVE SIMON Democratic-Farmer-Labor	write-in, if any
<input type="radio"/> HEATHER JOHNSON Libertarian Party	<input type="radio"/> BOB ODDEN Libertarian Party	
write-in, if any	write-in, if any	COUNTY COMMISSIONER DISTRICT 5 VOTE FOR ONE
U.S. REPRESENTATIVE DISTRICT 7 VOTE FOR ONE	STATE AUDITOR VOTE FOR ONE	<input type="radio"/> JON CHRISTENSEN
<input type="radio"/> TORREY WESTROM Republican	<input type="radio"/> PATRICK DEAN Independence	<input type="radio"/> JOE NAGEL
<input type="radio"/> COLLIN C. PETERSON Democratic-Farmer-Labor	<input type="radio"/> RANDY GILBERT Republican	write-in, if any
write-in, if any	<input type="radio"/> REBECCA OTTO Democratic-Farmer-Labor	COUNTY AUDITOR - TREASURER VOTE FOR ONE
<b>STATE OFFICES</b>	<input type="radio"/> KEEGAN IVERSEN Libertarian Party	<input type="radio"/> CINDY SCHULTZ
STATE REPRESENTATIVE DISTRICT 18A VOTE FOR ONE	JUDITH SCHWARTZBACKER Grassroots - Legalize Cannabis	write-in, if any
<input type="radio"/> DEAN URDAHL Republican	write-in, if any	COUNTY RECORDER VOTE FOR ONE
<input type="radio"/> STEVEN SCHIROO Democratic-Farmer-Labor	ATTORNEY GENERAL VOTE FOR ONE	<input type="radio"/> LYNN ETTA SCHRUPP
write-in, if any	<input type="radio"/> BRANDAN BORGOS Independence	write-in, if any
STATE REPRESENTATIVE DISTRICT 18B VOTE FOR ONE	<input type="radio"/> SCOTT NEWMAN Republican	COUNTY SHERIFF VOTE FOR ONE
<input type="radio"/> GLENN H. GRUENHAGEN Republican	<input type="radio"/> LORI SWANSON Democratic-Farmer-Labor	<input type="radio"/> SCOTT REHMANN
<input type="radio"/> JOHN LIPKE Democratic-Farmer-Labor	<input type="radio"/> ANDY DAWKINS Green Party	write-in, if any
write-in, if any	<input type="radio"/> MARY O'CONNOR Libertarian Party	COUNTY ATTORNEY VOTE FOR ONE
GOVERNOR AND LIEUTENANT GOVERNOR VOTE FOR ONE TEAM	<input type="radio"/> DAN R. VACEK Legal Marijuana Now	<input type="radio"/> MICHAEL JUNGE
<input type="radio"/> HANNAH NICOLLET AND TIM GIESEKE Independence	write-in, if any	write-in, if any
<input type="radio"/> JEFF JOHNSON AND BILL KUISLE Republican		SOIL AND WATER CONSERVATION DISTRICT SUPERVISOR DISTRICT 1 VOTE FOR ONE
<input type="radio"/> MARK DAYTON AND TINA SMITH Democratic-Farmer-Labor		<input type="radio"/> CHARLES W. MATHEWS
<input type="radio"/> CHRIS HOLBROOK AND CHRIS DOCK Libertarian Party		write-in, if any
<input type="radio"/> CHRIS WRIGHT AND DAVID DANIELS Grassroots - Legalize Cannabis		SOIL AND WATER CONSERVATION DISTRICT SUPERVISOR DISTRICT 2 VOTE FOR ONE
write-in, if any		<input type="radio"/> ROGER SCHULTZ
		write-in, if any
<b>CITY OFFICES</b>	<b>CITY OFFICES</b>	<b>CITY OFFICES</b>
MAYOR CITY OF BISCAKY VOTE FOR ONE	COUNCIL MEMBER SEAT 1 CITY OF HUTCHINSON VOTE FOR ONE	COUNCIL MEMBER CITY OF STEWART VOTE FOR UP TO TWO
write-in, if any	<input type="radio"/> MARY CHRISTENSEN	<input type="radio"/> CHUCK KRUGGEL
MAYOR CITY OF BROWNTON VOTE FOR ONE	write-in, if any	<input type="radio"/> KEVIN MASRUD
<input type="radio"/> SARAH M. POTTS	COUNCIL MEMBER SEAT 2 CITY OF HUTCHINSON VOTE FOR ONE	<input type="radio"/> CINDY MERRELL
<input type="radio"/> NORMAN SCHWARZE	<input type="radio"/> JOHN K. LOFDAHL	<input type="radio"/> CURT GLAESER
write-in, if any	write-in, if any	write-in, if any
MAYOR CITY OF HUTCHINSON VOTE FOR ONE	COUNCIL MEMBER SEAT 2 CITY OF GLENCOE VOTE FOR ONE	COUNCIL MEMBER CITY OF WINSTED VOTE FOR UP TO TWO
<input type="radio"/> STEVE COOK	<input type="radio"/> JOHN W. SCHRUPP	<input type="radio"/> GEORGE SCHULENBERG
<input type="radio"/> GARY T. FORCIER	write-in, if any	<input type="radio"/> MAX FASCHING
write-in, if any	COUNCIL MEMBER SEAT 3 CITY OF GLENCOE VOTE FOR ONE	write-in, if any
MAYOR CITY OF LESTER PRAIRIE VOTE FOR ONE	<input type="radio"/> GARY C. ZIEMER	COUNCIL MEMBER CITY OF LESTER PRAIRIE FOUR YEAR TERM VOTE FOR UP TO TWO
<input type="radio"/> ANDREW HEIMERL	<input type="radio"/> MARIE THURN	<input type="radio"/> RON FOUST
<input type="radio"/> MARK MILLER	write-in, if any	<input type="radio"/> LARRY HOOF
write-in, if any	COUNCIL MEMBER CITY OF BISCAKY FOUR YEAR TERM VOTE FOR ONE	write-in, if any
MAYOR CITY OF SILVER LAKE VOTE FOR ONE	write-in, if any	write-in, if any
<input type="radio"/> BRUCE BEBO	COUNCIL MEMBER CITY OF BROWNTON VOTE FOR UP TO TWO	COUNCIL MEMBER CITY OF LESTER PRAIRIE TWO YEAR TERM VOTE FOR ONE
write-in, if any	<input type="radio"/> DOUGLAS A. BLOCK	write-in, if any
MAYOR CITY OF STEWART VOTE FOR ONE	<input type="radio"/> CURT CARRIGAN	COUNCIL MEMBER CITY OF BISCAKY TWO YEAR TERM VOTE FOR UP TO TWO
<input type="radio"/> JASON PEIRCE	write-in, if any	write-in, if any
write-in, if any	write-in, if any	write-in, if any
MAYOR CITY OF WINSTED VOTE FOR ONE	COUNCIL MEMBER CITY OF PLATO VOTE FOR UP TO TWO	<b>TOWN OFFICES</b>
<input type="radio"/> STEVE STOTKO	<input type="radio"/> VEEANN WOOD	TOWN SUPERVISOR SEAT 1 TOWN OF BERGEN VOTE FOR ONE
write-in, if any	<input type="radio"/> JAKE NELSON	<input type="radio"/> FRANCIS BURCH
MAYOR CITY OF PLATO VOTE FOR ONE	write-in, if any	<input type="radio"/> HARLAN MATHEWS
<input type="radio"/> BOB BECKER	write-in, if any	write-in, if any
write-in, if any	COUNCIL MEMBER CITY OF SILVER LAKE VOTE FOR UP TO TWO	TOWN SUPERVISOR SEAT 1 TOWN OF HELEN VOTE FOR ONE
COUNCIL MEMBER AT LARGE CITY OF GLENCOE VOTE FOR ONE	write-in, if any	<input type="radio"/> MARK JOHNSON
<input type="radio"/> LORI ADAMIETZ	write-in, if any	write-in, if any
<input type="radio"/> ALLEN ROBECK	write-in, if any	TOWN SUPERVISOR SEAT 1 TOWN OF GLENCOE VOTE FOR ONE
write-in, if any		<input type="radio"/> DUANE HAAG
		write-in, if any

STATE OF MINNESOTA		
STATE GENERAL ELECTION BALLOT		
INSTRUCTIONS TO VOTERS: To vote, completely fill in the oval(s) next to your choice(s) like this: <input type="radio"/>		
<b>TOWN OFFICES</b>	<b>TOWN OFFICES</b>	<b>SCHOOL DISTRICT OFFICES</b>
TOWN SUPERVISOR SEAT 1 TOWN OF WINSTED VOTE FOR ONE	TOWN TREASURER TOWN OF GLENCOE VOTE FOR ONE	SCHOOL BOARD MEMBER INDEPENDENT SCHOOL DISTRICT NO. 2687 (HOWARD LAKE -WAVERLY-WINSTED) VOTE FOR UP TO THREE
<input type="radio"/> DALE JOHN GUENIGSMAN	<input type="radio"/> BRUCE BARGMANN	<input type="radio"/> JAMIE WIECH
write-in, if any	write-in, if any	<input type="radio"/> JOANIE KOCHER
TOWN SUPERVISOR SEAT A TOWN OF ACOMA VOTE FOR ONE	<b>SCHOOL DISTRICT OFFICES</b>	<input type="radio"/> PAUL BRAVINDER
<input type="radio"/> ROBERT COLE	SCHOOL BOARD MEMBER INDEPENDENT SCHOOL DISTRICT NO. 423 (HUTCHINSON) VOTE FOR UP TO THREE	<input type="radio"/> CHARLES BUSH
<input type="radio"/> DAN MURPHY	<input type="radio"/> BYRON BETTENHAUSEN	write-in, if any
<input type="radio"/> TOM SCHLUETER	<input type="radio"/> MIKE CARLS	write-in, if any
<input type="radio"/> LYNN SPLITTGERBER	<input type="radio"/> JOSHUA GEHLEN	write-in, if any
write-in, if any	<input type="radio"/> JOELLEN KIMBALL	SCHOOL BOARD MEMBER GIBBON DISTRICT INDEPENDENT SCHOOL DISTRICT NO. 2365 (GIBBON-FAIRFAX-WINTHROP) VOTE FOR ONE
TOWN SUPERVISOR SEAT A TOWN OF RICH VALLEY VOTE FOR ONE	<input type="radio"/> EDWARD J. CAYA	<input type="radio"/> STACY HELGET
<input type="radio"/> PAUL E. NIKKEL	<input type="radio"/> DON MARTINEZ	write-in, if any
<input type="radio"/> DONALD R. LHOTKA	write-in, if any	SCHOOL BOARD MEMBER FAIRFAX DISTRICT INDEPENDENT SCHOOL DISTRICT NO. 2365 (GIBBON-FAIRFAX-WINTHROP) VOTE FOR ONE
write-in, if any	write-in, if any	write-in, if any
TOWN SUPERVISOR SEAT C TOWN OF SUMTER VOTE FOR ONE	write-in, if any	SCHOOL BOARD MEMBER WINTHROP DISTRICT INDEPENDENT SCHOOL DISTRICT NO. 2365 (GIBBON-FAIRFAX-WINTHROP) VOTE FOR ONE
<input type="radio"/> GARY WALLER	SCHOOL BOARD MEMBER INDEPENDENT SCHOOL DISTRICT NO. 424 (LESTER PRAIRIE) VOTE FOR UP TO THREE	<input type="radio"/> MICHAEL KUEHN
write-in, if any	<input type="radio"/> MATTHEW KLITZKE	write-in, if any
TOWN CLERK TOWN OF RICH VALLEY VOTE FOR ONE	write-in, if any	SCHOOL BOARD MEMBER WINTHROP DISTRICT INDEPENDENT SCHOOL DISTRICT NO. 2365 (GIBBON-FAIRFAX-WINTHROP) VOTE FOR ONE
<input type="radio"/> THERESA RUSTEN	write-in, if any	write-in, if any
write-in, if any	SCHOOL BOARD MEMBER INDEPENDENT SCHOOL DISTRICT NO. 465 (LITCHFIELD) VOTE FOR UP TO THREE	<input type="radio"/> LINDA MUNOZ
TOWN CLERK TOWN OF SUMTER VOTE FOR ONE	<input type="radio"/> GREG MATHEWS	write-in, if any
<input type="radio"/> JANEL ZIMMERMAN	<input type="radio"/> MARLIN SCHUTTE	SPECIAL ELECTION FOR SCHOOL BOARD MEMBER GIBBON DISTRICT INDEPENDENT SCHOOL DISTRICT NO. 2365 (GIBBON-FAIRFAX-WINTHROP) To fill vacancy in term expiring January 2, 2017 VOTE FOR ONE
write-in, if any	<input type="radio"/> DARRIN ANDERSON	<input type="radio"/> DAN P. SCHAIBLE
TOWN CLERK TOWN OF WINSTED VOTE FOR ONE	write-in, if any	<input type="radio"/> DWAYNE DIERS
write-in, if any	write-in, if any	write-in, if any
TOWN TREASURER TOWN OF ACOMA VOTE FOR ONE	SCHOOL BOARD MEMBER INDEPENDENT SCHOOL DISTRICT NO. 2859 (GLENCOE-SILVER LAKE) VOTE FOR UP TO THREE	SPECIAL ELECTION FOR SCHOOL BOARD MEMBER INDEPENDENT SCHOOL DISTRICT NO. 2687 (HOWARD LAKE -WAVERLY-WINSTED) To fill vacancy in term expiring January 2, 2017 VOTE FOR ONE
<input type="radio"/> GARY GRAHAM	<input type="radio"/> GARY V. SCHREIFELS	<input type="radio"/> DAN P. SCHAIBLE
write-in, if any	<input type="radio"/> CLARK J. CHRISTIANSON	<input type="radio"/> DWAYNE DIERS
TOWN TREASURER TOWN OF BERGEN VOTE FOR ONE	<input type="radio"/> JASON LINDEMAN	write-in, if any
<input type="radio"/> ANGELA LEVERICH	<input type="radio"/> PAT FOGARTY	write-in, if any
write-in, if any	<input type="radio"/> ANNE TWISS	write-in, if any
	write-in, if any	write-in, if any
<b>SCHOOL DISTRICT QUESTIONS</b>	<b>JUDICIAL OFFICES</b>	<b>1ST DISTRICT COURT</b>
SPECIAL ELECTION INDEPENDENT SCHOOL DISTRICT NO. 2159 (BUFFALO LAKE-HECTOR-STEWART)	<b>SUPREME COURT</b>	JUDGE 12 VOTE FOR ONE
SCHOOL DISTRICT QUESTION 1 APPROVAL OF SCHOOL DISTRICT REFERENDUM REVENUE AUTHORIZATION	ASSOCIATE JUSTICE 2 VOTE FOR ONE	<input type="radio"/> MICHAEL D. WENTZELL Incumbent
The board of Independent School District No. 2159 (Buffalo Lake-Hector-Stewart) has proposed to increase its general education revenue by \$180 per pupil. The proposed referendum revenue authorization would be applicable for ten years unless otherwise revoked or reduced as provided by law.	<input type="radio"/> JOHN HANCOCK	write-in, if any
Shall the increase in the revenue proposed by the board of Independent School District No. 2159 be approved?	<input type="radio"/> WILHELMINA (MIMI) WRIGHT Incumbent	JUDGE 16 VOTE FOR ONE
YES	write-in, if any	<input type="radio"/> SHAWN MOYNIHAN Incumbent
NO	ASSOCIATE JUSTICE 3 VOTE FOR ONE	write-in, if any
BY VOTING "YES" ON THIS BALLOT QUESTION, YOU ARE VOTING FOR A PROPERTY TAX INCREASE.	<input type="radio"/> MICHELLE L. MACDONALD	JUDGE 18 VOTE FOR ONE
	<input type="radio"/> DAVID LILLEHAUG Incumbent	<input type="radio"/> CHRISTIAN SEAN WILTON Incumbent
	write-in, if any	write-in, if any
	<b>COURT OF APPEALS</b>	JUDGE 27 VOTE FOR ONE
	JUDGE 1 VOTE FOR ONE	<input type="radio"/> MIKE FAHEY Incumbent
	<input type="radio"/> JOHN R. RODENBERG Incumbent	write-in, if any
	write-in, if any	JUDGE 28 VOTE FOR ONE
	JUDGE 3 VOTE FOR ONE	<input type="radio"/> KAREN J. ASPHAUG Incumbent
	<input type="radio"/> CAROL A. HOOTEN Incumbent	write-in, if any
	write-in, if any	JUDGE 30 VOTE FOR ONE
	JUDGE 4 VOTE FOR ONE	<input type="radio"/> THOMAS W. BIBUS Incumbent
	<input type="radio"/> JOHN P. SMITH Incumbent	write-in, if any
	write-in, if any	JUDGE 31 VOTE FOR ONE
	JUDGE 9 VOTE FOR ONE	<input type="radio"/> MARY J. THEISEN Incumbent
	<input type="radio"/> MICHAEL KIRK Incumbent	write-in, if any
	write-in, if any	JUDGE 32 VOTE FOR ONE
	JUDGE 10 VOTE FOR ONE	<input type="radio"/> JOSEPH CARTER Incumbent
	<input type="radio"/> ANN M. OFFERMANN Incumbent	write-in, if any
	write-in, if any	
	JUDGE 3 VOTE FOR ONE	
	<input type="radio"/> THOMAS W. PUGH Incumbent	
	write-in, if any	
	JUDGE 5 VOTE FOR ONE	
	<input type="radio"/> KEVIN EIDE Incumbent	
	write-in, if any	
	JUDGE 12 VOTE FOR ONE	
	<input type="radio"/> MARGARET CHUTICH Incumbent	
	write-in, if any	
	JUDGE 15 VOTE FOR ONE	
	<input type="radio"/> KEVIN G. ROSS Incumbent	
	write-in, if any	

For News, Sports & More view us online at  
[www.GlencoeNews.com](http://www.GlencoeNews.com)

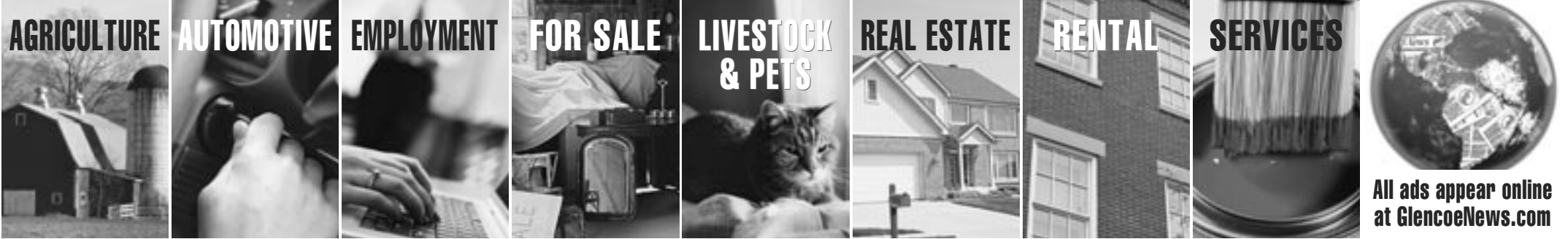
McLeod Publishing

Chronicle Classifieds

The McLeod County Chronicle  
The Glencoe Advertiser  
The Sibley Shopper  
Arlington Enterprise  
The Galaxy

**ONE WEEK: \$15.80** For 20 words, one time in ANY TWO PAPERS and on the internet. 30¢ per word after first 20 words.  
**ADD ANOTHER PAPER FOR ONLY \$2.00 PER PAPER** (based on first week pricing)  
**3-WEEK SPECIAL:** 2<sup>nd</sup> Week 1/2 Price 3<sup>rd</sup> Week FREE

To place an ad: Call: 320-864-5518; Fax: 320-864-5510; E-Mail: trishak@glencoenews.com; Mail: P.O. Box 188, Glencoe, MN 55336



All Five Papers Reach Over 50,000 Readers Weekly in over 33 Communities

**Advertising Deadlines** ■ The McLeod County Chronicle **Mondays at Noon** | The Glencoe Advertiser, The Sibley Shopper & The Galaxy **Wednesdays at NOON**  
The Arlington Enterprise **Tuesdays at Noon**

<b>AGRICULTURE</b> Farm Equipment Misc. Farm Items LIESKE TRACTOR ANNOUNCEMENTS Announcements AUTOMOTIVE Parts, Repair EMPLOYMENT Business Opportunity Home Health	<b>EMPLOYMENT</b> Help Wanted Work Wanted FOR SALE Give Aways Heating/Air Conditioning WOODMASTER WOOD BOILERS Home Health	<b>FOR SALE</b> Household Goods Wanted To Buy Cattle Pets REAL ESTATE Farms	<b>REAL ESTATE</b> Houses Lake Homes RENTAL Apartment Business, Office	<b>RENTAL</b> Business, Office House Storage Townhomes Want To Rent	<b>RENTAL</b> Want To Rent SERVICES Building Contractors Child Care Furniture Garden, Lawn Care Misc. Service
--	---	---	---	--	--

### Notice of Public Sale

Fri., Nov. 14, at 10 a.m.

1x3

liens sale of personal property will be held at Glen Knoll Storage located at 707 13<sup>th</sup> St. West, Glencoe, MN 55336

**INCLUDED IN THE SALE:**  
Unit 071 • Yolanda Alvarado  
416 E. Adams St.  
Arlington, MN 55307  
Partial Inv.: table, lamp, and other miscellaneous items.  
Unit 097 • Bernard Dreier  
700 Hwy. 7 E.  
Hutchinson, MN 55350  
Partial Inv.: saw, totes, couch, and other miscellaneous items.

### PLAN NOW for Winter!

- Residential
- Commercial
- Country Driveways
- Salting
- Sanding
- Hauling
- Blowing

# SNOW REMOVAL

**PHIL GOETTL**  
612-655-1379  
888-864-5979  
www.mngutter.com

### HELP WANTED

**HAMLIN COUNTY FARMERS**  
Coop of Hayti, SD is seeking a qualified General Manager. This \$40M cooperative offering grain marketing full service retail agronomy, energy (bulk / retail), and feed (bulk / bagged). Grain, agronomy, energy, feed, and service as well as financial and personal management experience required. Email: larry.fuller@chscinc.com or fax (888/653-5527) resume to: Larry Fuller, 5213 Shoal Drive, Bismarck ND 58503

**HELP WANTED - DRIVERS**  
LINSMEIER TRUCKING  
A MN based company is now hiring Company Drivers & Owner/Operators to pull hopper bottom in the upper Midwest. Home weekends. Call 320/382-6644

**DRIVERS: NEED CDL A OR B**  
to relocate vehicles from area body plants to various locations throughout U.S. No forced dispatch. We specialize in continuation trips to reduce deadhead!!! 800/501-3783 or mamotransportation.com under Careers.

**HELP WANTED - DRIVERS**  
DRIVER TRAINEES NEEDED!  
Become a driver for Stevens Transport! No experience needed! New drivers earn \$800+ per week. Paid CDL training! Stevens covers all costs! 888/589-9677 driven4stevens.com

**GREAT JOBS**  
In oil fields! Potentially earn \$100,000+ annually. Housing available. Class A CDL w/doubles/triples, hazmat & tank endorsements. Lunderby Trucking. Send resume tim@lunderbys.com

**MISCELLANEOUS**  
REDUCE YOUR CABLE BILL!  
Get a whole-home Satellite system installed at no cost and programming starting at \$19.99/mo. Free HD/DVR Upgrades, so call now 877/342-0356

**ARE YOU IN**  
big trouble with the IRS? Stop wage & bank levies, liens & audits, unfiled tax returns, payroll issues, & resolve tax debt fast. Seen on CNN. A BBB. Call 800/402-0732

**DISH TV RETAILER**  
Starting at \$19.99/month (for 12 mos.) & High Speed Internet starting at \$14.95/month (where available.) Save! Ask About same day installation! Call now! 800/297-8706

**CANADA DRUG CENTER**  
is your choice for safe and affordable medications. Our licensed Canadian mail order pharmacy will provide you with savings of up to 75% on all your medication needs. Call today 800/259-1096 for \$10.00 off your first prescription and free shipping.

**SAWMILLS**  
from only \$4397.00 Make & save money with your own bandmill. Cut lumber any dimension. In stock ready to ship. Free Info/DVD: 800/578-1363 Ext.300N www.NorwoodSawmills.com

**DONATE YOUR CAR**  
truck or boat to Heritage For The Blind. Free 3 day vacation, tax deductible, free towing, all paperwork taken care of 800/439-1735

**ADVERTISE HERE STATEWIDE IN 260+ NEWSPAPERS FOR ONLY \$279 PER WEEK! CALL 800-279-2979**



Minnesota Classified Advertising Network

**Nursing Assistant**  
Full-time evenings.  
Part-time days.  
Includes every other weekend.

Tour the newest addition to our 5-star Care Center. Eight more Private Resident Rooms with ceiling track lift systems!

Contact Kendra khiles@blhcc.org  
**Buffalo Lake Healthcare Center**  
703 W. Yellowstone Trail  
Buffalo Lake, MN 55314  
(320) 833-5364 ext. 14  
Applications also at blhcc.org  
EEO/AA



Picture Perfect Landscape & Design  
**Landscape crew leaders and crew members positions available.**  
Must have a clean and valid drivers license, reliable and enjoy working outside. Company paid health and dental insurance.  
If interested please contact:  
Picture Perfect Landscape & Design  
(952) 442-1726

**FULL-TIME & Weekend**

**SERVICE TECHNICIAN / INSTALLER**  
2 years experience or 2 year degree in Plumbing, Electrician or Auto Mechanics a plus, but willing to train a VERY energetic person. Benefits include: Salary, commissions, bonus, retirement plan, insurance.

Any questions or interest, please stop by **IN PERSON** at Home Solutions:  
1124 Hennepin Ave., Glencoe



**Transit Dispatcher Needed**  
**SERVICE IS EXPANDING!**

Trailblazer Transit is looking for an office professional to provide excellent customer service and stability in a fast-paced, team-oriented environment. Strong communication skills, attention to detail, and a positive attitude are required. Duties include: answering telephones and two-way radios, scheduling rides, record keeping, and general office support. Minimum qualifications include the ability to read maps, provide directions, organize data, and control and direct resources. Post-secondary degree is preferred as the position requires high-level thinking skills. One full-time shift from 10 a.m. to 6 p.m. is currently available in Glencoe. Hourly pay range: \$15.48 to \$19.52 with starting pay at beginning of pay range. Employees work each day Monday through Friday with the opportunity to work extra hours as needed. Excellent benefit package! Earn 17 days of Paid Time Off per year plus 6 additional paid holidays and PERA retirement. Full-time employees also receive a health, life, and short-term disability insurance package. Successful applicants must pass a drug test and background checks. EOE.



Come and Join Our Team!  
**1-888-743-3828**  
Call toll-free for application and information.  
Applications accepted until position is filled.

**Dietary Position**  
Part-time

Includes every other weekend.

**Housekeeper Position**  
Part-time

Includes every other weekend.

Contact Marty mnyhus@blhcc.org  
**Buffalo Lake Healthcare Center**  
703 W. Yellowstone Trail  
Buffalo Lake, MN 55314  
(320) 833-5364 ext. 20  
Applications also at blhcc.org  
EEO/AA

**HHA/TMAS**

The Birchwood House in Hutchinson is currently hiring HHA/TMAS for night shifts. Part-time and casual shifts available. Night shift differential. Flexible schedules, 401k and paid time off. EOE.

Apply online at [www.prhomecare.com](http://www.prhomecare.com), select career tab and choose Hutchinson office.



**FT Fabricator**

Responsibilities include reading prints, measuring, routing, sanding and installing. Requires an eye for detail/quality, ability to lift up to 100 lbs., dependable, insurable with Class D license, team player, and ability to work independently. Small shop environment.

Call 320-238-2196 or email [info@pinske-edge.com](mailto:info@pinske-edge.com)



Plato, MN • 320-238-2196  
[www.platocustomconcepts.com](http://www.platocustomconcepts.com)



**Registered Nurses**

ED/Med/Surg  
\$2,000 Sign-on Bonus  
1 year acute care required

Med/Surg/OB with OB experience

**Sr. Behavioral Health LPN**

**Sr. Behavioral Health Cook**

**Nutrition Housekeeping Aide**

**Surgery**

Benefit Eligible

**Casual Positions**

RNs, CNAs, Dietary Aide, Cook

Previous Experience Preferred. EOE

Contact: Human Resources (320) 693-4521

[ctwardy@meekermemorial.org](mailto:ctwardy@meekermemorial.org)

612 S. Sibley Ave. S. Litchfield, MN 55355

[www.meekermemorial.org](http://www.meekermemorial.org)



**AVEYRON HOMES, INC.**

Aveyron Homes, Inc. has openings for both full-time and part-time employees to provide care to clients with varying disabilities in their home and in the community. Hours include afternoons, evenings, overnights, and every other weekend. We have openings in Hutchinson and the surrounding area. Applicants must be at least 18 years old, have a valid driver's license, pass a background study and motor vehicle check, and be able to lift a minimum of 30 lbs.

Apply in person at 222 5th Avenue NW, Hutchinson, or call Sandy at 320-587-6277 if you would like to have an application sent to you.

Aveyron Homes, Inc., is an Equal Opportunity Employer.

**HELP WANTED**

The Arlington Enterprise is seeking a Freelance Writer to cover the Sibley County Board meetings in Gaylord. Meetings are held the 2<sup>nd</sup> and 4<sup>th</sup> Tuesday of each month at 8 a.m.

**Duties include:**

- attend all Sibley County Board meetings;
- write a minimum of 3 articles per meeting;
- articles must be submitted by 9 a.m. Wednesday morning following the meeting.

Pay is based on experience and the number of articles submitted each month.

Submit resume and writing samples to:

Publisher Karin Ramige Cornwell at 716 E. 10<sup>th</sup> St., Glencoe, MN 55336

email [karinr@glencoenews.com](mailto:karinr@glencoenews.com) or call 320-864-5518.



Get 2 Months of The McLeod County Chronicle or Arlington Enterprise

**FREE**

With a one-year subscription

(Offer good thru Oct. 31, 2014)

**TWO MONTHS FREE**

Name \_\_\_\_\_  
Mailing Address \_\_\_\_\_  
City/State/Zip \_\_\_\_\_  
Please indicate:  McLeod County Chronicle  Arlington Enterprise  
Please indicate:  New  Renewal  
 Check Enclosed  Bill my credit card  VISA  M/C  DISC  AMEX  
Charge acct.# \_\_\_\_\_  
Exp. date \_\_\_\_\_ Signature: \_\_\_\_\_

Mail to our Glencoe office at:  
**The McLeod County Chronicle** PO Box 188, Glencoe, MN 55336  
or e-mail subscription information to: [trishak@glencoenews.com](mailto:trishak@glencoenews.com)  
Offer expires Oct. 31, 2014.

**1-year Subscription Rates**

**The McLeod County Chronicle**  
For McLeod County and New Auburn addresses .....\$39/yr  
Addresses Elsewhere in Minn. \$45/yr  
Addresses Outside of Minn. \$51/yr

**1-year Subscription Rates**  
**Arlington Enterprise**

Addresses In Minnesota ....\$37/yr  
Addresses Outside of Minn. \$43/yr

The McLeod County  
**Chronicle**  
716 East 10<sup>th</sup> St., PO Box 188  
Glencoe, MN 55336  
(320) 864-5518

**Arlington Enterprise**  
402 W. Alden St., PO Box 388  
Arlington, MN 55307  
(507) 964-5547

**Hutchinson TECHNOLOGY**  
Hutchinson Technology  
40 West Highland Park  
Hutchinson, MN 55350  
[www.htch.com](http://www.htch.com)

Equal Opportunity Employer

**MIROMATRIX MEDICAL INC.**

**Manufacturing Technicians**  
Immediate Openings Available

**Position Description:**

Miromatrix Medical Inc., a biotechnology company based on perfusion decellularization technology, is focused on the development of new biologic-based therapeutics including an acellular biologic matrix and transplantable organs to treat and cure various disease states. The company has launched its first regenerative medicine product and has an emerging portfolio of new products to be launched over the coming months and years.

Miromatrix has immediate openings for highly motivated individuals who want to join our team and launch a career in a fast-paced, results-oriented work environment. We are currently hiring Manufacturing Technicians to process our biologic mesh in our Glencoe, MN facility. Primary duties include the preparing of incoming raw materials, perfusion decellularization, and manufacturing /packaging of final products in an ISO class 7 cleanroom environment. No cleanroom or biologic experience is required, as extensive training will be given to all new employees. Compensation is hourly and eligible for overtime compensation. Excellent benefits including Health/Dental insurance for all new hires with Miromatrix paying all monthly premiums. Paid vacations earned on an accrual basis starting on your first day.

**Required Qualifications:**

Interested individuals must be a high school graduate or have completed a GED. Excellent organizational, verbal, written and interpersonal skills are essential, as well as enthusiasm for a collaborative work culture. You bring the right enthusiasm and energy and we will provide the job training necessary to be successful.

Consideration given for progressive educational accomplishments and relevant work experience.

Miromatrix offers competitive compensation and benefits with great growth potential. The company is committed to providing a safe, fair and enjoyable work environment. Miromatrix is an equal opportunity employer.

Please send a resume and cover letter to: [Jlee@miromatrix.com](mailto:Jlee@miromatrix.com)





# Fall Sports

## GLENCOE-SILVER LAKE OCTOBER 2014



Photo Courtesy of Creek View Images

### FOOTBALL

Pictured left to right, front row: Wyatt Simrell, Zach Pierson, Tyler Chap, Mason Goettl, Tanner Grack, Bennett Bielke, Zach Jungclaus, Keaton Anderson, Jayden Tschimperle, Reed Wawrzyniak, Christopher Lemke; row 2: Tanner Rosckes, Alexis Salgado, Aaron Schuch, Gus Mendoza, Tyler Melchert, Jon Richer, Austin Maynard, Thomas Becker, Matthew Dahlke, Marc Kochem, Collin Raduenz; row 3: Nick Tabbert, Mitchell Kettner, Jacob Popelka, Dylan Schuth, Nick Brelje, Josh Ramirez, Alex Schrader, Tony Lowden, Seth Schuette, Teddy Petersen, Tristan Weber; row 4: Matt Dietel, Jordan Rolf, Alex Romano, Jacob Vonberge, Shane Ehrke, Cameron Chap, Dalton Kosek, Peyton Sell, Blake Beneke, Nathan Schuch, Brandon Fronk; row 5: Logan Artmann, Tyler Hausladen, Tyler Ehrke, Jake Vasek, Jacob Litzau, Jordan Kaczmarek, Hunter Glaeser, Luis Duenas, Mason Trippel, Grayson Maresh, Ryan Schuch; row 6: Axel Schulz, Nick Schmidt, Mitchell Rolf, Carlos Barrientos, Michael Forar, Tanner Chmielewski, Taylor Elke, Luke Frahm; back row: Coaches: Rich Cohrs, David Dose, Steve Davis, Dan Svoboda, Head Coach Scott Tschimperle, Kraig Terlinden, Mike Hardy, Paul Ruud, Paul Lemke.



Photo Courtesy of Creek View Images

### VOLLEYBALL

Pictured left to right, in front: Madison Kalenberg; middle row: Cortney Konen, Taylor Novak, Jessica Lemke, Alexis Kerslake, Emily Muetzel, Rachael Popp; back row: Olivia Scharpe, Erika Ribar, Erika Mielke, Layne Herrmann, Maddie Monahan.



Photo Courtesy of Creek View Images

### CHEERLEADERS

Pictured left to right, front row: Shania Rose, Katilyn Susdorf, Brooke Noeldner, Courtney Zajcek; middle row: Madelyn Kjenstad, Samantha Cornell, Arianna Galvan; back row: Elizabeth Boyum, Jenaya Posusta, Catherine Holtz.



Photo Courtesy of Creek View Images

### TENNIS

Pictured left to right, front row: Ashlyn Ratike and Emily VonBerge; row 2: Teanna Vorlicek, Lindsay Wedin, Ellie Lepel, Rachel Rusten, Callie Raduenz, Hannah Lemke, Chelsea Bandas and Madeline Dresse; row 3: Payton Lilienthal, Justine Helmbrecht, Grace Draeger, Jenessa Urban, Piper Davis, Stephanie Elsing, Ashley Miller, Allie Harpel, Sarah Bandas, Theresa Stiers and Jessica Brelje.



Photo Courtesy of Creek View Images

### Girls' SOCCER

Pictured left to right, front row: Hattie Dreier-Schultz, Faith Rakow, Maddie Kuehn, Jordan Breidenbach, Zoe Christensen, Keisha Prake, Ashlyn Stuewe, Aubrey Giesen; back row: Head Coach Zach Otto-Fisher, Gary Carter, Paige Anderson, Taryn Reichow, Shelby Clouse, Emily Thalman, Kirsten Barott, Macy Rhodes, Paige Litzau, Debbie Moosbrugger, Pat Chiariello. Not pictured: Vanessa Villarreal.



Photo Courtesy of Nelson Photography

### Boys' CROSS COUNTRY

From left to right: Head Coach Jeff Delwiche, Coach Josh Metcalf, Jac Chelman, Tony Fischer, Ethan Knudten, Chandler Swift, Ben Olson, Ethan Wolff, Eric Kruschke, Brandon Richter, Joe Knudten, Austin Mathwig, Michael Schaefer, Garrett Ober, Michael Meyer, Patrick Kunkel, Isiah Herout, Jake Rusten, Austin Schroeffer, Patrick Fehrenbach, Zack Herout, Alex Hallund, Isaac Swift, Garret Ardolf, Nate Welch, Isaac Krueger, Coach Jann Savre.



Photo Courtesy of Nelson Photography

### Girls' CROSS COUNTRY

From left to right: Taylor Venier, Megan Siewert; row 2: Coach Josh Metcalf, Gia Venier, Peyton Miska-Alberts, Becca Green, Josie Schmitt, MicAnna Maresh, Mary Schmitt, Head Coach Jann Savre; row 3: Coach Jeff Delwiche, AnnaMaria Falcon, Brittney Richter, Cassandra Shemanek, Courtney Larsen, Kayla DeYonge, Erica Hecksel, Marlaina Chelman, Tarin Michaelis, Coach Christopher Bick; row 4: Savannah Stradtman, Robin Swift, Morgan Anderson.

### This Page Sponsored By These Area Businesses:

AgStar Financial Services  
American Family Ins.,  
John Decker  
Coborn's Inc.  
Crow River Press  
Dobrava Brothers, Inc.  
Dubb's Grill & Bar  
Edward Jones, Kirk Miller

First Community Bank of  
Silver Lake  
Gerry's Vision  
Glencoe Co-op Assn.  
Glencoe VFW Post 5102  
Gould's Diamond & Jewelry  
Grandma's Closet  
Gruenhagen Insurance

Harpel Bros., Inc.  
Hite Hardware & Paint  
Holt Motors  
Hutchinson Health  
Jerry Scharpe, LTD  
Kaz's Auto & Truck Repair  
McLeod Publishing, Inc.  
MidCountry Bank

Priority 1-Metrowest Realty  
Professional Insurance Providers  
Schad, Lindstrand &  
Schuith, LTD  
Security Bank & Trust Co.  
Seneca Foods Corp.  
Shimanski Orchard  
Southwest Eye Care

State Farm Insurance,  
Larry Anderson  
Strifesky Trucking  
Sumter Mutual Insurance  
Company  
Unhinged! Pizza